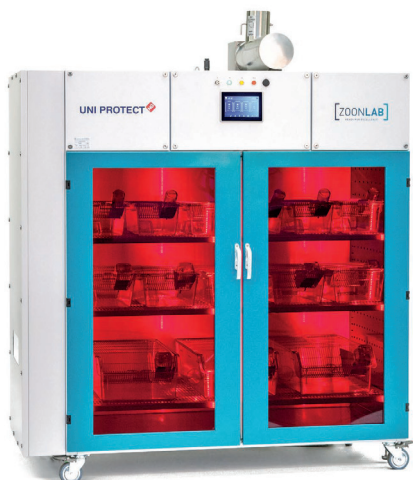


Climate chambers complement established animal housing systems in an SPF (specific pathogen-free) environment that is hygienically strictly controlled, for breeding lines and rare species that have to be kept under special climatic conditions or deviating lighting cycles. Cabinets have full control over temperature, pressure, humidity and lighting conditions – ideal for behavioral, metabolic or physiological experiments. Effective ventilation is provided by HEPA filters.



ZOOONLAB UNIPROTECT NG

- A sensitive pressure regulator maintaining the pressure barrier to the animal storage space ensures safe operation in positive or negative pressure
- H14 class HEPA filters clean the supply and exhaust air, minimising the risk of microbiological contamination
- Available in 3 model sizes
- Humidifier module and activated carbon filter as an option

TSE CLIMATE CHAMBER

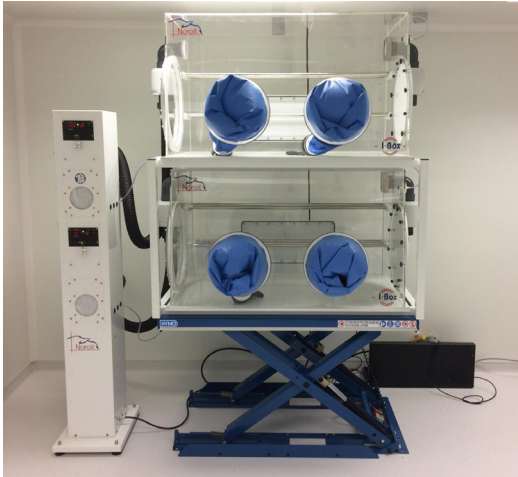
- Four integrated fans and a ventilation plate ensure constant air circulation and stable distribution of heat
- High level of internal temperature homogeneity from 4-35°C
- Lights are installed into the chamber doors, are fully dimmable, and allow definition of customized light/dark cycles
- Fast execution of programmed temperature changes
- Specifically designed for indirect calorimetry experiments
- Fully controlled by PhenoMaster software



NOROIT A-BOX Vented animal cabinet

- The set value can span from ambient to 30 °C
- Up to 24 programmable on-off day/night cycles available
- Positive and negative pressure functions
- Available in 3 model sizes

Isolators for laboratory animal research



I-Box ZOO isolators will strictly maintain the specific sanitary conditions of the housed rodents. The I-Box ZOO isolators ensure absolute safety conditions to the users and maximum protection of the housed animals.

- HEPA filters
- Available isolator models with 2, 3 or 4 gloves
- Possibility of connection to other Noroit systems

Animal's isolation and recovery

AUTOCLAVABLE ISOLATION CHAMBERS - FIC

FIC units protect animals and personnel from cross-contamination. They are ideal for both acute and chronic holding of animals. Units are autoclavable or steam sterilizable. Each cubicle has its own filtration systems, so it provides multispecies maintenance.



PLAS LABS™



INTENSIVE CARE UNIT FROM PLAS LABS

ICU is a self-contained life support system which provides a controlled environment designed to regulate temperature and oxygen levels. These conditions are essential in caring for the critically ill or injured animal patient.



ANIMAL RECOVERY UNIT

Unit is specifically designed to support animals requiring an elevated temperature within the cage environment and housed temporarily until they are ready to return to the standard caging. Dedicated for Allentown IVC cages.