



When you need a compact, self-contained cabinet X-ray to provide the sharpest images.

## The XPERT<sup>®</sup> 20 Cabinet X-ray System

**The most compact,**  
enormously powerful  
**X-ray imaging solution**  
for science and research  
**and non-destructive testing.**

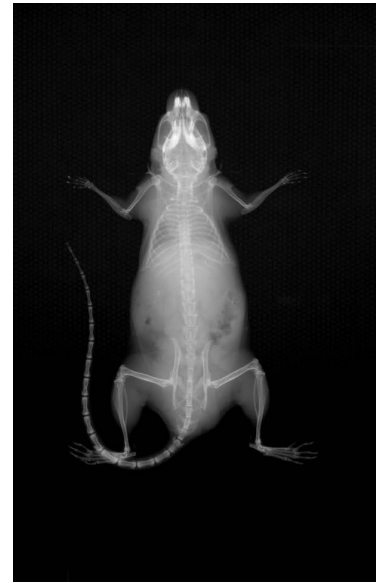
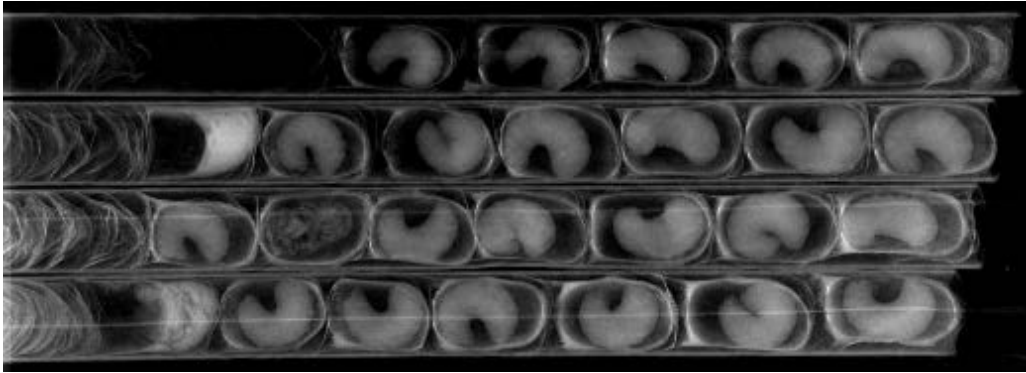
### **XPERT 20 System Features:**

- Benchtop X-Ray System designed for placement directly in your lab
- Eliminate the need for transportation of samples to a separate area.
- AEC based fully automated digital imaging with manual option included.
- Automatic calibration with zero warm-up time.
- Ability to save annotated images in multiple formats.
- Contact and 1.3X geometric magnification stages.
- Desktop or mobile platform option for easy transportation
- Seed counting software

**KUBTEC**  
S C I E N T I F I C

# The XPERT<sup>®</sup> 20

## Cabinet X-ray Systems



## Specifications

Detector Size	3" x 5" (12 cm x 7 cm)
Spatial Resolution	10.4 lp/mm, contact mode 15.6 lp/mm, mag mode
Energy Range	10-50 kV
Tube Current	up to 1.0 mA
Window Filtration	0.005" beryllium
Power	90-250 VAC, 50/60 Hz, 400 VA
Wireless Connectivity	Standard
Size (W x D x H)	11" x 12" x 20" (28 x 30.5 x 51 cm)
Weight without cart	70 lbs. (32 kg)
Weight with cart	170 lbs. (77 kg)



**KUBTEC**  
S C I E N T I F I C

Specifications subject to change without notice. XPERT, KUBTEC and the KUBTEC logo are registered trademarks of KUB Technologies, Inc. M1260B-0521

WWW.KUBTEC.COM [f](#) [t](#) [in](#) [v](#)