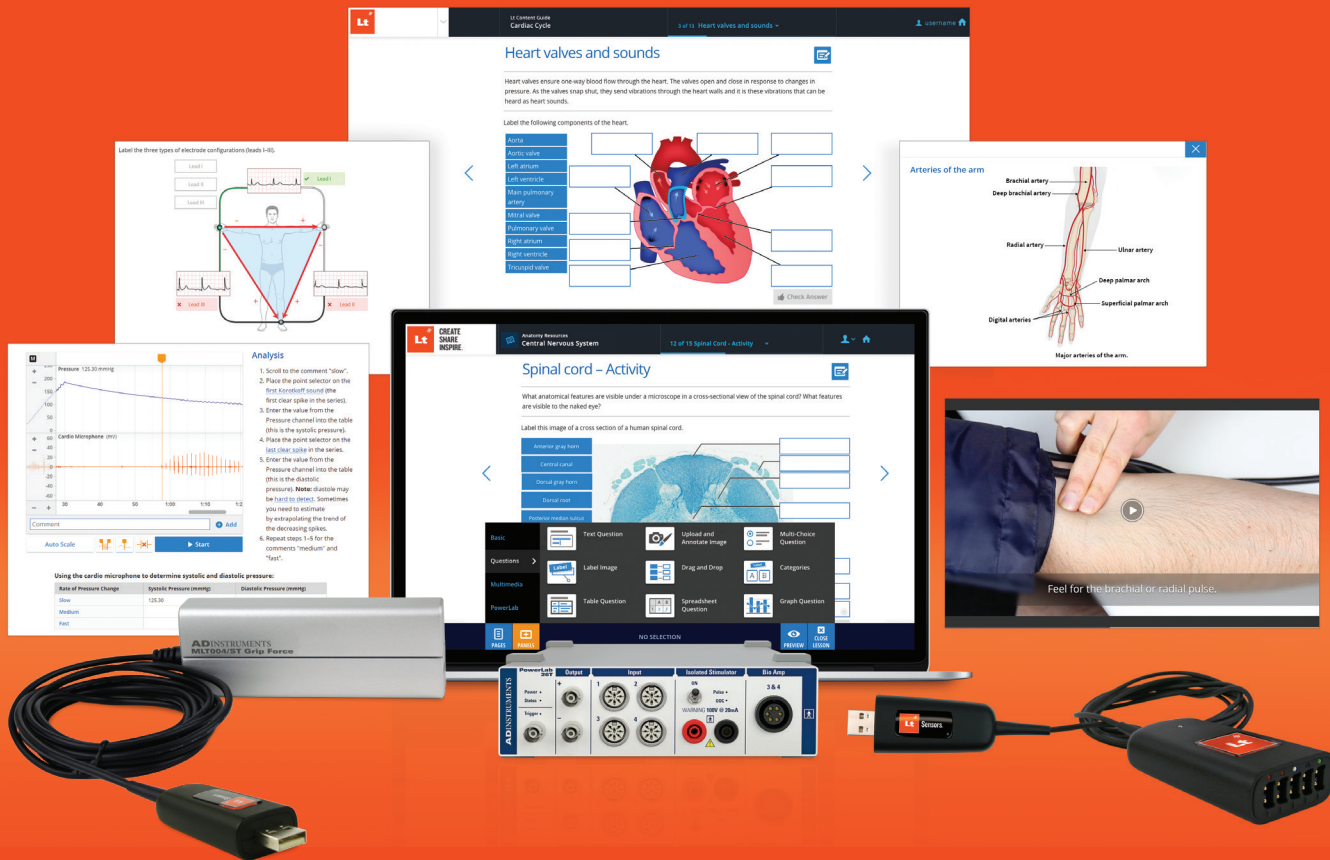




**CREATE
SHARE
INSPIRE.**

Lt Overview

Engage students in active learning in the lab or remotely



Future proof your course with our innovative and versatile teaching platform across all learning environments.

Lt is an online learning platform with over 500 ready-to-use, interactive and fully customisable lessons for life science, nursing, and medicine.

Lt is the world's only cloud-based learning platform with data acquisition and analysis capabilities. Students can record and analyse their own physiological signals using PowerLab or Lt Sensors, for a truly hands-on learning experience.

Lessons in Lt include pre-recorded example data that can be switched on automatically when teaching remotely, or in situations where data recording isn't available.

Create, customise and deliver your own interactive content that students can access anywhere. Lt's cloud-based platform means students can learn on almost any device that connects to the internet. Whether they use iOS or android, tablet, mobile or laptop, lessons will be resized and optimised to look great.

Building media-rich lessons is simple. Lt uses a wide range of content types to create interactive exercises including multiple choice questions, short form written answers and image annotation.

"I have 1000 students each semester but my labs run smoother with Lt."

- **Aura Grandidge**, Manager Biology Labs,
Anatomy and Physiology, University of Rhode Island, USA



Improved efficiency



Increased student engagement



Improved results in theory and clinical practice



Increased student pass rates

It is currently used by 200,000+ students from more than 350 universities worldwide.

Courses and content:

Anatomy • Animal Physiology • Biology • Exercise Physiology • Human Physiology
Medicine • Neuroscience • Nursing • Pharmacology • Psychophysiology



How can Lt help?

Educators

Authoring and customisation

Easily edit, share and update our content or create your own in real-time, wherever and whenever you need. Drag-and-drop a range of content types including video, audio, images, quizzes and text directly into your lessons.

Collaborative

Share content and workload with your fellow educators and teaching assistants. Set varying levels of access to allow others to review content, add content, or publish revisions online.

Flexible grading

Automatically grade quizzes while keeping the flexibility to add feedback and positive reinforcement, and manually grade written assessments.

Supporting your Lt journey

When you sign up to Lt, you become part of our global community of Lt collaborators. We provide you with ongoing support, including a dedicated Customer Success Manager during onboarding and beyond to ensure you're meeting your teaching objectives.



CREATE
SHARE
INSPIRE.

90-DAY FREE TRIAL

Sign up now: adi.to/lr

Administration

Simple setup

Lt needs only an internet browser for course administration, authoring, and publishing. Our data acquisition app, used for sampling, installs in 30 seconds.

Analytics

Our analytics allow you to view class progress in each lesson and across your course, and provide valuable insights about where and how students are interacting with course material.

Secure and scalable

Totally secure, Lt is hosted on Amazon Web Service's encrypted servers with guaranteed 99% uptime, and the ability to maintain speed as more students login to Lt.

LMS integration

Lt is automatically updated with new features by our Lt seamlessly integrates with Canvas, Blackboard Learn, and Moodle so that you can synchronise student lists to Lt, and with one click, send Lt grades directly back to your LMS.

Future proof

Lt is automatically updated with ongoing new features by our team of dedicated engineers, developers, and education specialists.

Students

Learn anywhere, anytime

Lt's cloud-based platform means students can learn on almost any device that connects to the internet. Whether they use iOS or android, tablet, mobile or laptop, lessons will be resized and optimised to look great.

PowerLab and Lt Sensor integration

In the lab, students can record and view their own physiological signals live on screen with PowerLab or Lt Sensors. Sampling panels in Lt can record Pulse, ECG, Respiratory Rate, Blood Pressure and more.

Remote learning

Labs include built-in, pre-recorded example data that students can access for their practical work, so they can continue to meet the desired learning outcomes in situations that don't have data recording capabilities.

Learn from real patients

For future health professionals, our patient cases allow students to follow a real patient from initial presentation to diagnosis and management. Expert healthcare professionals provide their views throughout the journey and students can practice note-taking and reflection.



"Lt has enabled us to achieve better academic standards and more satisfied students."

- **Dr Michael Morris**, Senior Lecturer: Physiology,
University of Sydney.

For more information contact your local representative at info@animalab.eu or visit www.animalab.eu